

IS-100 Lite

Refraction unit

Compact Design. Essential Performance.



Compact Design. Essential Performance.



Smart Design for Everyday Use

The IS-100 Lite features a slim lay-out that fits effortlessly into smaller exam rooms. Designed to support efficient eye examinations without unnecessary complexity, it accommodates two instruments on a sliding table, with the option to include a trial lens drawer or a drawer unit.

Practitioners can choose between two phoropter arm options with a mechanical lock, or with a counterbalanced mechanism, allowing flexibility to match different workflow preferences.

IS-100 Lite features

Control panel

The IS-100 Lite features a straightforward control panel for easy operation. It provides access to:

- Chair elevation control
- Main power switch for the unit and installed instruments on the table plate
- Room illumination control with dimming from 0% to 100%



Room illumination

The integrated LED uplighter provides soft, indirect illumination for a comfortable examination environment. Light intensity is dimmable to suit different testing conditions.



Safety stopper

The IS-100 Lite has a safety mechanism located under the tabletop that automatically stops the chair elevation if it comes in contact with the patient's leg.

IS-100 Lite Configuration

IS-100 Lite Configuration

The IS-100 Lite is available in a standard configuration with a selection of optional accessories to suit different practice needs. It is offered in a right-handed version, paired with the standard OC-100 Lite chair for a complete, coordinated setup.

The tabletop features a swivel movement for easy instrument positioning, while patient height adjustment is managed via the chair.



IS-100 Lite Optional accessories

Chair Accessories

Footrest for OC-100 Lite

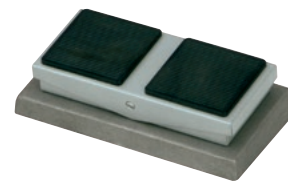
An optional footrest is available.

This footrest helps patients to sit in a correct ergonomic position and reduces strain on their legs, back and neck.



Foot switch

This optional foot switch can be connected to the IS-100 Lite unit to control the up/down movement of the chair. It provides smooth and easy control of the chair.



VT-670 mechanical lock phoropter arm

The VT-670 phoropter arm enables mounting of the majority of phoropter heads currently available on the market. The mechanical lock ensures fixed positioning of the phoropter in front of the patient. The phoropter arm is metallic silver in colour.



VT-671 counterbalanced phoropter arm

The VT-671 phoropter arm is available with a handle for easy manoeuvring of the phoropter head. The spring-loaded counterbalanced mechanism ensures stable positioning of the phoropter. The phoropter arm is metallic silver in colour.



Projector (ACP) support

A chart projector support is available for the IS-100 Lite. The support attaches to the IS-100 Lite column facilitating vision testing.



Optional accessories



Trial lens drawer

A trial lens drawer is available as an optional accessory and can be ordered separately. Designed to accommodate most common trial lens sets, it offers a practical and space-efficient storage solution.

Drawer dimensions: 450 × 320 × 55 mm



Reading light

An optional LED reading light can be connected to the column of the IS-100 Lite. The RL-100 reading light has a flexible arm enabling the light to be directed to the correct position with ease. The colour of the light is warm white for added comfort during near vision exams.



Slit Lamp power supply

The slit lamp generic power supply (PS-100) can be used to power slit lamps that have no dedicated power supply of their own. This generic power supply can be mounted under the tabletop and provides easy access to the slit lamp illumination control.



Satellite support

These stable satellite supports can be placed anywhere around the IS-100 Lite and provide added flexibility to the refraction procedure. The satellite support accommodates the Topcon CV-5000 control unit (KB-50S) and can also be fitted with the mounting bracket to hold its power supply.

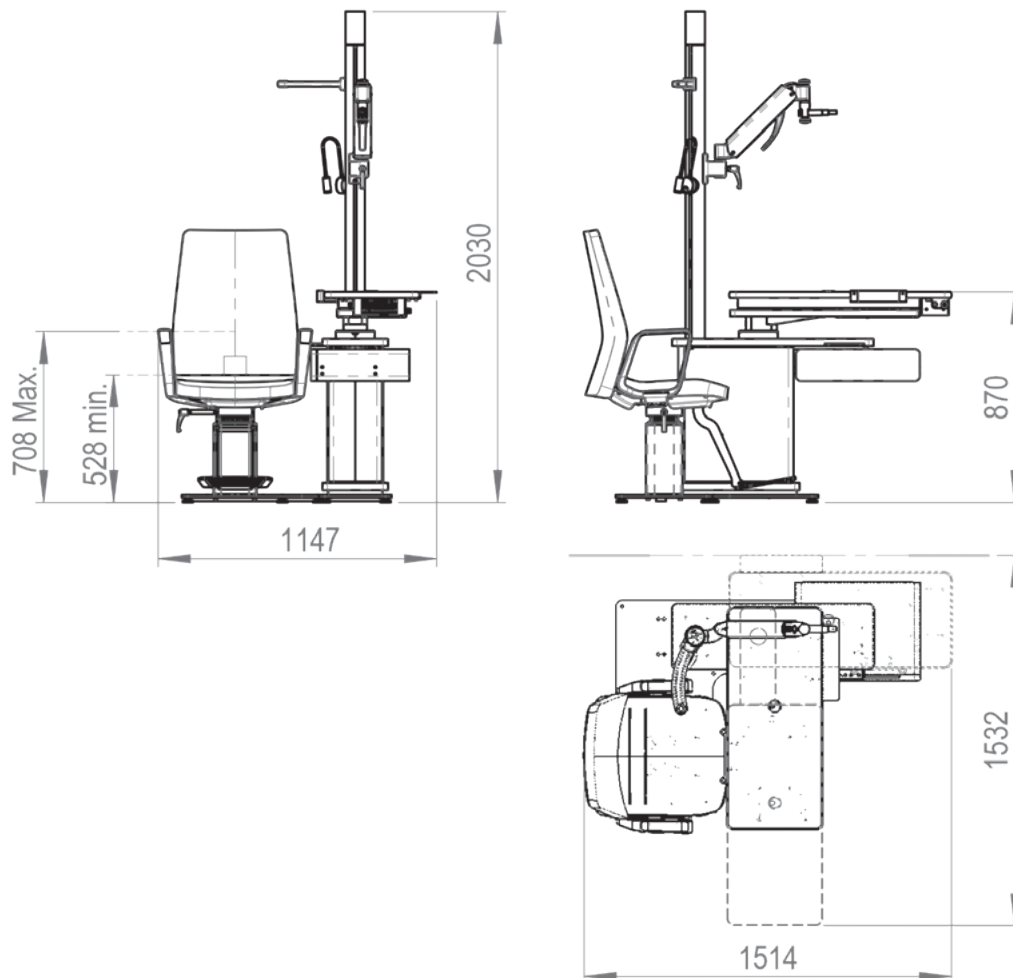
IS-100 Lite Specifications



Drawer unit

The optional IS-100 Lite drawer unit fits seamlessly to the basic unit, providing four drawers with storage space for handheld equipment. The drawers can also accommodate an optional trial lens set.

General dimensions



Specifications of IS-100 Lite

Technical specifications ophthalmic chairs

	OC-100Lite
Backrest	fixed
Armrest	standard
Footrest	optional
Minimum height	528 mm
Maximum height	728 mm
Maximum load	160 kg
Angle rotation with manual brake	30°
Maximum consumption	24 VDC/Max 7.3A
Electrical classification	Class I
Net weight	32 kg
Gross weight	52 kg
Work cycle	10% max. / 2 min-18 min

Technical specifications phoropecter arms

	VT-670	VT-671
Load capacity change	4.5 - 10kg (adjustable)	4.5 - 10kg (adjustable)
Stroke of phoropecter arm	+43° / -15°	+43° / -15°
Maximum horizontal rotation of phoropecter arm	Free	Free
Positioning lock	Mechanical	Counterbalanced
Net weight of phoropecter arm	6.6 kg	6.6 kg

Technical specifications IS-100 Lite

	IS-100 Lite
Unit	
Power	110 - 240 V - / 50 - 60 Hz
Maximum consumption	850 VA
Electrical classification	Class I, Type B
Consumption of first tabletop instrument	160 VA
Consumption of second tabletop instrument	160 VA
Net weight IS-100 Lite	121 kg
Maximum load of instruments on the tabletop	30 kg + 30 kg

IMPORTANT

In order to obtain the best results with this instrument, please be sure to review all user instructions prior to operation. Not all products, services or offers are approved or offered in every market, and products vary from one country to another. Contact your local distributor for country-specific information and availability.



TOPCON HEALTHCARE SOLUTIONS EMEA OY

Saaristonkatu 9, 90100 Oulu, FINLAND
Phone: +358-20-734-8190
E-mail: thsema.sales@topcon.com
www.topconhealthcare.eu

TOPCON EUROPE MEDICAL B.V.

Essebaan 69, 2908 LJ Capelle a/d IJssel
THE NETHERLANDS
Phone: +31-(0)10-4585077
Fax: +31-(0)10-4585045
E-mail: medical@topcon.com
www.topconhealthcare.eu

TOPCON DANMARK MEDICAL

Praestemarksvej 25, 4000 Roskilde
DANMARK
Phone: +45-46-327500
Fax: +45-46-327555
E-mail: info.todk@topcon.com
www.topconhealthcare.eu/dk_DK

TOPCON SCANDINAVIA

Neongatan 2, P.O.Box 25, 43151 Mölndal
SWEDEN
Phone: +46-(0)31-7109200
Fax: +46-(0)31-7109249
E-mail: info.hcs.se@topcon.com
www.topconhealthcare.eu/sv_SE

TOPCON ESPAÑA

Oficina Principal en España
Frederic Mompou, 4,
08960 Sant Just Desvern, Barcelona, SPAIN
Phone: +34-93-4734057
Fax: +34-93-4733932
E-mail: medica@topcon.com
www.topconhealthcare.eu/es_ES

TOPCON ITALY

Viale dell'Industria 60,
20037 Paderno Dugnano, (MI) ITALY
Phone: +39-02-9186671
E-mail: info_tit@topcon.com
www.topconhealthcare.eu/it_IT

TOPCON FRANCE MEDICAL

1 rue des Vergers, Parc Swen,
Bâtiment 2, 69760 Limonest, FRANCE
Phone: +33-(0)4-37 58 19 40
Fax: +33-(0)4-72 23 86 60
E-mail: topconfrance@topcon.com
www.topconhealthcare.eu/fr_FR

TOPCON DEUTSCHLAND MEDICAL

Hanns-Martin-Schleyer-Strasse 41,
D-47877 Willich, GERMANY
Phone: (+49)2154-885-0
Fax: (+49)2154-885-177
E-mail: info@topcon-medical.de
www.topconhealthcare.eu/de_DE

TOPCON POLSKA SP. Z. O. O.

ul. Warszawska 23, 42-470 Siewierz
POLAND
Phone: +48-(0)32-670-50-45
Fax: +48-(0)32-671-34-05
E-mail: info.tpl@topcon.com
www.topconhealthcare.eu/pl_PL

TOPCON GREAT BRITAIN MEDICAL

Topcon House, Kennet Side, Bone Lane,
Newbury, Berkshire RG14 5PX
UNITED KINGDOM
Phone: +44-(0)1635-551120
Fax: +44-(0)1635-551170
E-mail: medical.tgbm@topcon.com
www.topconhealthcare.eu/en_UK

TOPCON IRELAND MEDICAL

Unit 292, Block G, Blanchardstown,
Corporate Park 2 Ballycoolin
Dublin 15, D15 DX58, IRELAND
Phone: +353-12233280
E-mail: medical.ie@topcon.com
www.topconhealthcare.eu/en_IE

TOPCON NORWAY MEDICAL

St. Hansveien 10, 3614 Kongsberg,
NORWAY
Phone: +47-32720072
E-mail: info.hcs.no@topcon.com
www.topconhealthcare.eu/nb_NO

TOPCON FINLAND MEDICAL,

TOPCON EUROPE MEDICAL

B.V.:N SUOMEN SIVULIIKE

Martintalo complex, 3. floor
Jaakonkatu 2, 01620 Vantaa
FINLAND
Phone: +358-29-123-1260
E-mail: info.hcs.fi@topcon.com
www.topconhealthcare.eu/fi_FI



ANCAR

Antoni Carles,S.A.
Carrer de la Volta dels Garrofers 41-42
08340 Vilassar de Mar Spain

