

MD-300L

Ultrasound Biomicroscope for Ophthalmology

Features

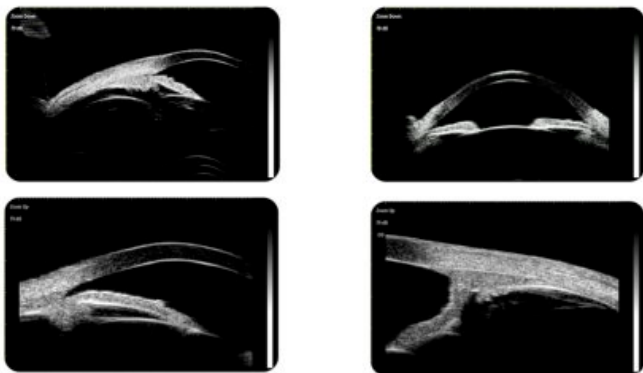
- 50MHz High Frequency
- Two view ports (8.25mm×5.5mm & 16.5mm×11mm) , half or sulcus to sulcus images
- Alarm and auto-freezing triggered when the probe approaches the cornea
- Probe protection: auto-freezing after 5 minutes of continuous scanning
- Dynamic cineloop: continually or separately
- Massive storage capacity
- Image processing and measurement, clinical report storage, search and statistics



MD-300L Ultrasound Biomicroscope for Ophthalmology

SPECIFICATIONS

- Probe Frequency: 50MHz
- Scan Mode: Linear Scanning
- Scanning Lines: 15 μ m between Each in Sulcus to Sulcus View Port and 7.5 μ m between Each in Half View Port
- Total Gain: ≥ 105 dB
- Display Mode: UBM & UBM+A
- View Ports: 8.25mm \times 5.5mm, 16.5mm \times 11mm
- Variable Delay Depth: Multi-level Adjustability
- Resolution: Axial $\leq 40\mu$ m, Lateral $\leq 40\mu$ m
- Dynamic Cineloop: Continually or Separately
- Image Measurement: Distance, Angle, Area and Perimeter
- Automatic alarm triggered when probe approaches cornea
- Real-time Clock
- Full-screen Annotation
- Video Port: SVGA
- Data Port: USB 2.0
- Dynamic Video Capture: Dynamic videos can be saved in *.AVI format
- Footswitch: Scan and Freeze/Save
- Real-time Image Capture and Storage
- Powerful Image Post-processing: (Gamma/Color Transformation, Color Inversion, Zooming & Annotation)
- OCT-style Pseudo-color Images with Description
- Patient Information System: Support Case Review, Search and Statistics
- Graph/Text Clinical Report Printout, Multi-format Report Templates Selectable
- Ergonomical User Interface



Address: Room D, F3, Building C2,
Xinmao Science Skill Park,
Huayuan Industry
Development Area,
Tianjin, 300384, China

Tel: +86-22-83713808
+86-22-83713881
Fax: +86-22-83713880
Website: www.MEDA.com.cn
Email: export@meda.com.cn