

# MD-320W

## Ultrasound Biomicroscope for Ophthalmology

### Features

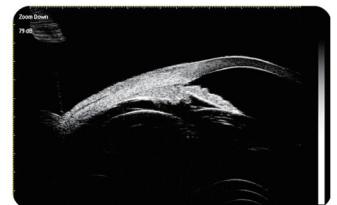
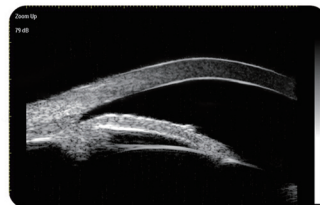
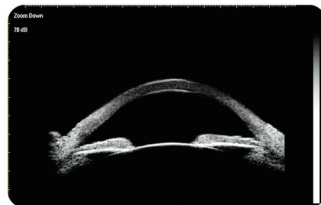
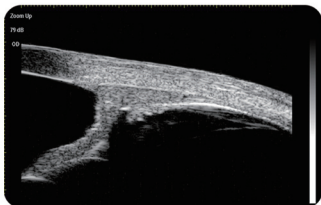
- High frequency & high resolution
- B mode
- Two view ports (8mm×5.7mm & 16mm×11.5mm), full or half sulcus-to-sulcus images
- Flexible probe operations
- Alarm and auto-freezing triggered when the probe is blocked or approaches the cornea
- One single clinical report can be accompanied with up to 30 images for print-out
- Image processing and measurement; report storage, search and statistics
- Built-in calendar & clock
- Portable design
- Massive storage capacity



# MD-320W Ultrasound Biomicroscope for Ophthalmology

## SPECIFICATIONS

- Probe frequency: 50MHz
- Resolution: axial $\leq$ 0.05mm, lateral $\leq$  0.05mm
- View ports: 8mm $\times$ 5.7mm & 16mm $\times$ 11.5mm
- Variable delay depth: 3~18 mm
- Image processing: brightness, contrast, annotation, etc.
- Screen measurement: distance, angle, area, etc
- Report printable with: patient's information, clinical test, description of images
- Total gain:  $\geq$ 105dB
- Gray scale: 256 levels
- File formats: BMP&DCM



Address: Room D, F3, Building C2,  
Xinmao Science Skill Park,  
Huayuan Industry  
Development Area,  
Tianjin, 300384, China

Tel: +86-22-83713828  
Fax: +86-22-83713880  
Website: [www.MEDA.com.cn](http://www.MEDA.com.cn)  
Email: [export@meda.com.cn](mailto:export@meda.com.cn)